

# NEWS RELEASE



CITY OF  
**FOLSOM**  
PARKS & RECREATION  
DEPARTMENT

**For Immediate Release  
June 9, 2015**

Contact: Cindy Abraham, Gallery Director  
Folsom Parks & Recreation Department,  
Community and Cultural Services, (916) 355-7285

**Gallery at 48 Natoma in Folsom, CA**

**Art Exhibition: "On the Right Track"**

**Classic and contemporary railroad art**

**Oil paintings by Gary Symington, and Patrick Karnahan  
and scale model displays by Scott Robertson**

**July 10 to August 27, 2015**

**Opening Reception: Friday, July 10, 2015, 6:00-8:00pm**

Hours are Monday through Friday from 9-5,  
With additional hours Tuesday and Wednesday nights from 6-8pm.

**Community Gallery: Annual Student Art Show**

Featuring adult art classes from the Art Center at 48 Natoma

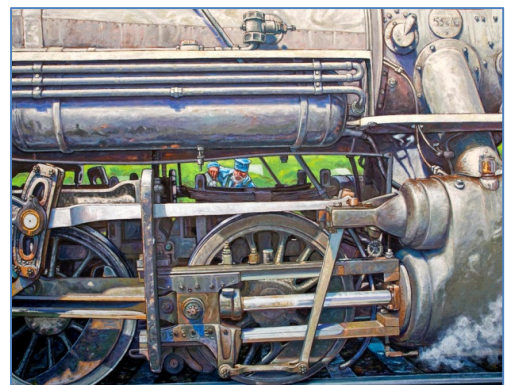


*Dodge City, Patrick Karnahan, oil on canvas*

All aboard for the next exhibit at the Gallery at 48 Natoma! The railroad has long been an important part of Folsom's history since the Gold Rush days. Now artwork that commemorates those historic connections will be displayed in the exhibit, "On the Right Track," from July 10 through August 27, 2015. Three premier railroad artists work will be featured, including impressionist oil paintings by Gary Symington, grand traditional oils on canvas by Patrick Karnahan and incredible scale model displays created by Scott Robertson.

Patrick Karnahan has been oil painting since he was eight years old. In addition to painting wildlands, Karnahan has been capturing the history of the American railroads on canvas for more than 20 years. He has completed a calendar on American railroads, and his artwork has been featured on numerous book and magazine covers. He also promotes art education for children in local schools. "It's satisfying," he says. "Usually, I'll sell my paintings and won't see them again. What I'm doing becomes part of the community." For 15 years, he worked for the USDA Forest Service as a seasonal firefighter and later as a graphic artist and public affairs specialist. He remains under contract to prepare paintings for Forest Service posters and publications. His paintings, based on years of personal experience on the fire lines, are full of highly accurate detail. They also reflect his emotional commitment to wildland firefighting and to conserving our public wildland treasures.

Gary Symington has been a full-time illustrator and graphic designer for over 40 years, but his real passion has always been painting in oils on canvas. After painting



*Oiling the 28, Gary Symington, oil on canvas*

- over -

primarily landscapes for many years, his most recent work reflects his interest in trains, with particular attention paid to the quality of the surface textures and discolorations of metal on the engines. His illustration clients have included L.L. Bean, *Windows* magazine and McDonalds. His commercial work has been shown with the Society of Illustrators and in the Strathmore Paper Graphics Gallery. Gary received a Bachelor of Fine Arts in Painting from Syracuse University, and studied at Sir John Cass School of Art in London, England.



*The Fictitious Town Hanging Rock, Scott Robertson, Narrow Gauge On30 Scale Model*

Scott Robertson is an acclaimed railroad model maker and has been creating railroad scenes over a culmination of many years. His ongoing project called the ND&AC (Never Done & Always Changing) Model Railroad is On30 scale with construction that started in 2004 and is still evolving. The fictitious town of Hanging Rock is a combination of two modules (30"x48" each) depicting a mountain town somewhere in the Sierra Mountains. "My model railroad does not represent any specific prototype, and it takes its scenery from many different geographic settings in the western United States. The era is sometime in the mid-20th century in places that are being logged over and mined out." Most of the structures are scratch built.

Scenery is mostly natural materials collected in the Sierra

Nevada Mountains, including real rock - not plaster castings. His models are truly an inspiration of both art and engineering combined.

In the adjacent **Community Gallery at 48 Natoma**, the **adult art classes held at the 48 Natoma Art Center** will be featured. The center offers classes to in a variety of art subjects including Chinese Brush painting, oil and acrylic painting, photography, ceramics, watercolor, drawing and more. Classes are open to the public and are offered for all ages and skill levels.

**The public is invited to celebrate both exhibits at the free opening reception on Friday, July 10, 2015 from 6:00 to 8:00pm**, with refreshments, wine and live guitar music by Daniel Roest.

The Gallery at 48 Natoma is managed by the Folsom Parks and Recreation Department and showcases art by regional and national professional artists, area museum collections and traveling exhibitions; offering high quality original art exhibits to the community that may otherwise not be experienced in this area.

The gallery is free and open to the public and art is available for purchase. **Hours are Monday through Friday from 9-5, with additional hours Tuesday and Wednesday evenings from 6-8pm.** Free tours can be arranged by appointment. For more information contact Cindy Abraham, (916) 355-7285, or [cabraham@folsom.ca.us](mailto:cabraham@folsom.ca.us).

- End -